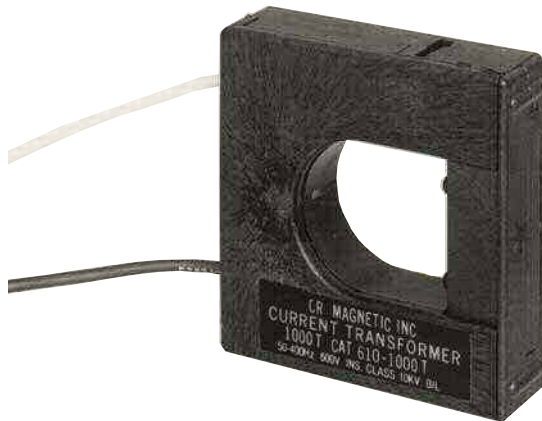


# Split Core Current Transformer

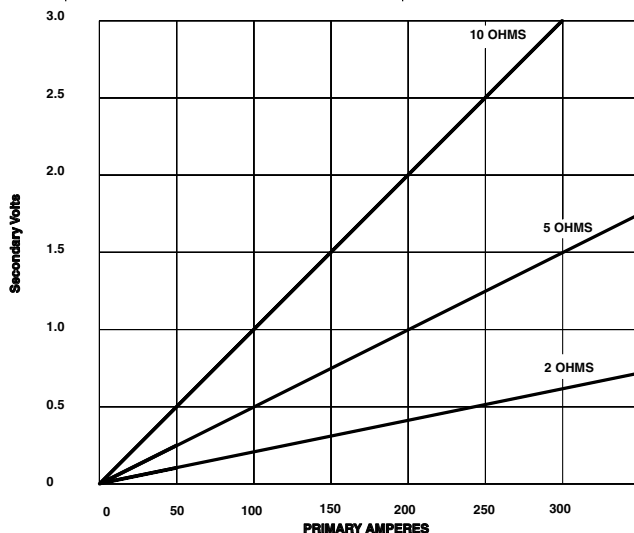
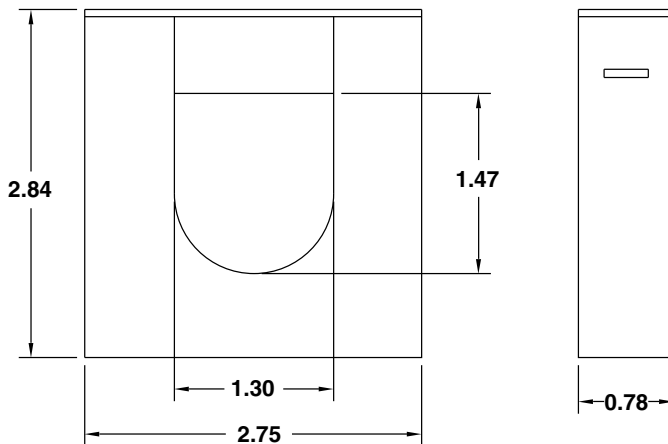
## 610-1000T



### PART NUMBERS

<b>610 - 1000T</b>	1000 Turns
--------------------	------------

### OUTLINE DRAWING



The **610-1000T** Split Core Current Transformer is designed for assembly to an existing electrical installation without the need for dismantling the primary bus or cables. It incorporates a snap fit between the fixed and removable sections.

This transformer is intended for use with high input impedance devices that require signal voltages up to 5 VAC.

The output can be rectified and filtered for devices requiring DC input. The non-linearity and voltage drop of the rectifiers and filters must be considered in the choice of the loading impedance.

### Application

For Energy Management Systems and Instrumentation Equipment having a High Input Impedance, eg. 14K ohms minimum

### Frequency

50-400 Hz

### Insulation Level

0.6 kV, BIL 10 kV full wave

### Construction

The core and windings are encased in UL approved plastic

### Continuous Thermal Current Rating

**Factor** 330A at 30° C amb  
250A at 55° C amb

### Flexible Leads

UL 1015 105° C, CSA approved, #18 AWG, 24" long unless otherwise specified

### Approximate Weight

10 oz

### Regulatory Agencies

