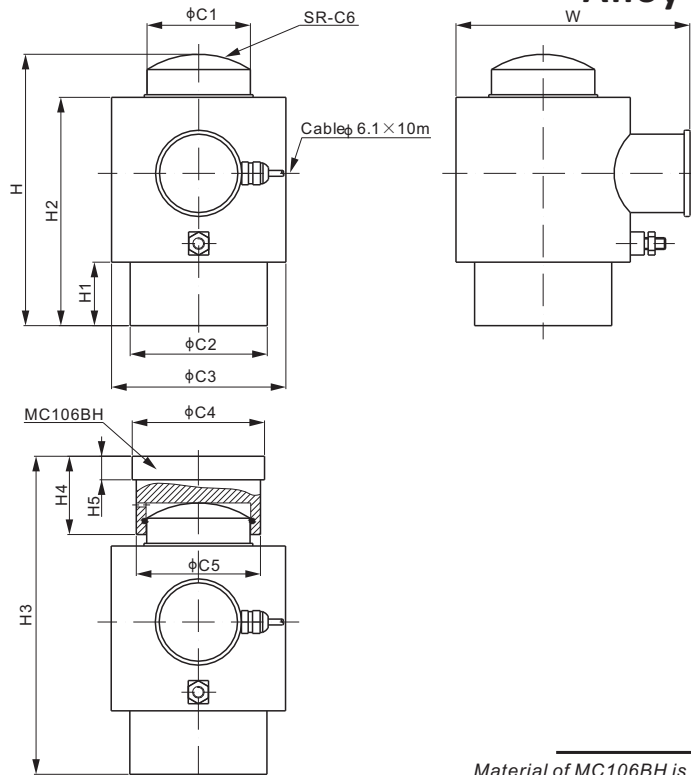


106BH

Alloy Steel



Material of MC106BH is alloy steel

CE RoHS

Mounting hardware to be ordered separately.

DIMENSIONS

RATED CAPACITY	C1	C2	C3	C4	C5	C6	H	H1	H2	H3	H4	H5	W
t/mm													
100	59.0	95.0	155.0	84.0	72.0	380.0	185.0	30.0	167.0	223.0	50.0	15.0	191.0
200	85.0	125.0	166.0	120.0	104.0	450.0	258.0	39.0	233.0	300.0	60.0	20.0	202.0
500	127.0	180.0	268.0	175.0	160.0	506.0	365.0	60.0	325.0	425.0	85.0	20.0	308.0
lb/inches (conversion of above dimensions)													
220,462.3	2.32	3.74	6.10	3.31	2.83	14.96	7.28	1.18	6.57	8.78	1.97	0.59	7.52
440,924.5	3.35	4.92	6.54	4.72	4.09	17.72	10.16	1.54	9.17	11.81	2.36	0.79	7.95
1,102,311.3	5.00	7.09	10.55	6.89	6.30	19.92	14.37	2.36	12.80	16.73	3.35	0.79	12.13

SPECIFICATIONS

Full Scale Output	2.0 mV/V ± 0.25%	Recommended Excitation	10V (15V Maximum)
Zero Balance	± 0.02 mV/V	Insulation Resistance	>2 [50V DC] GΩ
Non-linearity	< ± 0.050%	Compensated Temperature Range	-10°C to 50°C / 14°F to 122°F
Repeatability	< ± 0.017%	Safe Overload	150% of full scale
Hysteresis Error	< ± 0.030%	Breaking Overload	300% of full scale
Creep in 30 min.	< ± 0.023%	Seal Type / IP Rating	Welded Seal / IP67
Input Resistance	770Ω ± 30	Cable Color Code	Exc+ Red Exc- Black
Output Resistance	700Ω ± 5		Sig+ Green Sig- White
Element Material	Alloy Steel, Nickel Plated		Shield Bare

PART NUMBER

Load Cell

Rated Capacity	Part No.	Shipping Weight (kg) Approx.
100t.....	106BH-100t.....	9.6
200t.....	106BH-200t.....	25.0
500t.....	106BH-500t.....	77.0

Mounting Hardware

Mounting Hardware	Load Cell Capacity	Part No.	Shipping Weight (kg)
Mounting Cap.....	100t.....	MC106BH-100t.....	1.4
	200t.....	MC106BH-200t.....	3.6
	500t.....	MC106BH-500t.....	11.3